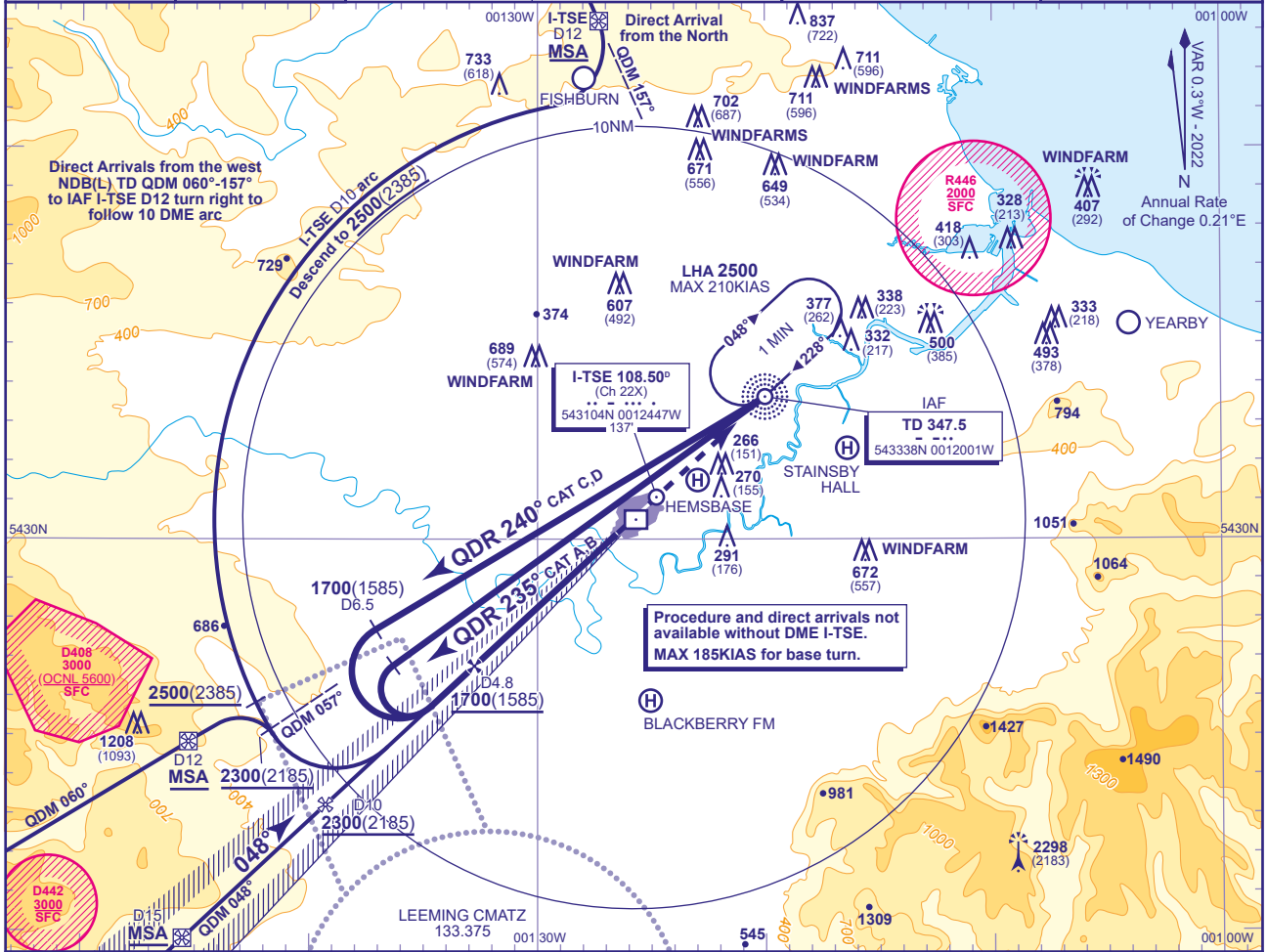


## INSTRUMENT APPROACH - ICAO

## TEESSIDE INTERNATIONAL

ILS/DME/NDB(L)  
RWY 05  
(ACFT CAT A,B,C,D)

		APP 118.855	TEESSIDE APPROACH	AD ELEVATION 120
		TWR 119.805	TEESSIDE TOWER	THR ELEVATION 115
		RAD 118.855	TEESSIDE RADAR	OBSTACLE ELEVATION 2298 AMSL (2183) (ABOVE THR)
		RAD 128.855	TEESSIDE DIRECTOR	
		ATIS 132.380	TEESSIDE INFORMATION	BEARINGS ARE MAGNETIC
MSA 25NM NDB(L) TD				TRANSITION ALTITUDE 6000

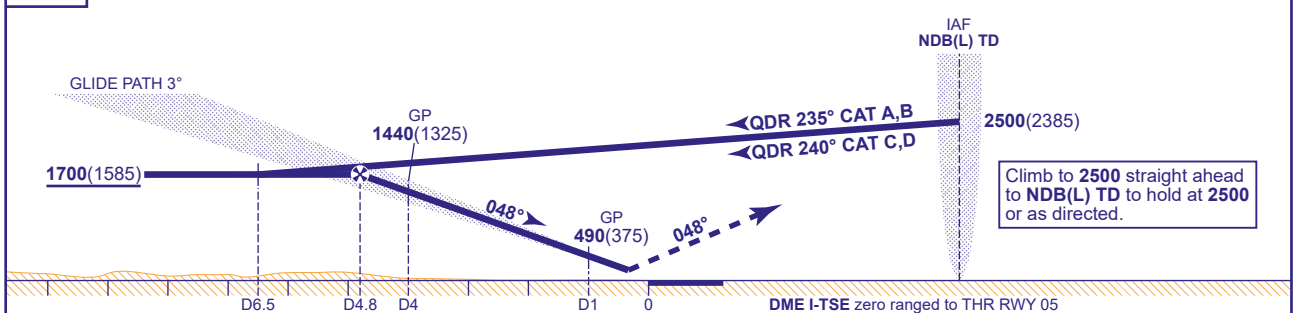


## RECOMMENDED PROFILE GLIDE PATH 3°, 318FT/NM

DME I-TSE	5	4	3	2	1
ALT(HGT)	1700(1585)	1440(1325)	1120(1005)	800(685)	490(375)

RDH 52

Arrival not below MSA.



Aircraft Category		A	B	C	D	Rate of descent	G/S KT	160	140	120	100	80
OCA (OCH)	CAT I	272(157)	282(167)	292(177)	305(190)		FT/MIN	850	740	640	530	420
VM(C)OCA (OCH AAL)	Total Area	590(470)	640(520)	760(640)	860(740)							

NOTE 1 NDB(L) TD and DME I-TSE not co-located beware of potentially confusing DME readings on the outbound leg of base turn procedures  
2 Direct/arc arrivals only available with ATC clearance.

CHANGE (5/24): DME I-TSE ELEVATION REVISED.